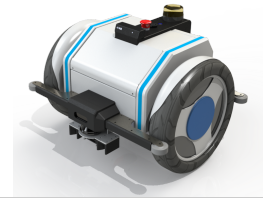


## Robosavvy Tugbot - Collaborative Mobile Robot



### Technical Specifications

<b>Application</b>	
Product type	Collaborative autonomous mobile robot for transport of payloads and/or tow wheeled carts
<b>Physical characteristics</b>	
Dimensions	741 × 640 × 463 mm [LxWxH]
Weight	47kg (standard configuration)
<b>Performance</b>	
Operational time	5h continuous
Max Pull Force	300Kg (depends of floor surface)
Max payload	70kg (carry on payload)
Max Speed	2.0m/s
Max Incline	5°
Turning radius	0.3m (without cart)
Position accuracy	+/-5cm; +/-1cm with 2D code marker
<b>Environmental conditions</b>	
Max traversable gap	3cm
Floor	Flat ground with smooth surface
Environment type	Indoor
Ambient temperature range	-5°C to 50°C (humidity 10-95% non-condensing)
IP class	IP 30
<b>Connectivity</b>	
Wi-fi	802.11a/b/g/n/ac, 2.4/5 GHz Dual-Band
Bluetooth	4.0 LE
<b>Sensors</b>	
Front Lidar	Hokuyo UAM-05LP-T301 – Safety compliant ISO13849-1, IEC61496-1/3
Rear Lidar	Hokuyo URG-04lx
Front camera	RGB / 3D depth camera
Rear camera	RGB / 3D depth camera
<b>Power</b>	
Battery (wheels)	Li-Ion 55V/650Wh
Battery (sensors and control)	Li-Ion 12V/240Wh

